

Piskwa', Welcome to Eltuek Arts Centre, our contemporary arts centre here in the historic North End of Sydney, in beautiful Unama'ki, Cape Breton Island.

Eltuek (el-do-ehg) is a Mi'kmaw word meaning "we are making (it) together."

The 'we' decides what the 'it' will be.

It could be a painting, a poem, or a shared meal; the list is endless.

Eltuek Arts Centre means accessible and inclusive spaces for art, community, and social change.

We follow the guidance of Mi'kmaw Elders to ensure respect and consideration is shown to the First Language and culture of the First Peoples of Unama'ki.

Eltuek Arts Centre opened in 2020 in the former Holy Angels Convent, ca. 1885.

Eltuek now serves the community as a creative cultural hub and centre for contemporary art.



**Etle'k**  
The Embers of the Fire are Still Going  
by Channele Julian and Isaac Gould (2022)

## Unama'ki, Cape Breton Island

Unceded and Unsurrendered Land

Eymu'ti'k Unama'ki, newte'jk l'uiknek te'sikl  
Mi'kmawe'l maqamikal mna'q iknmuetumitl.  
Ula maqamikew wiaqwikasik Wantaqo'tie'l aqq  
l'lamatultimkewe'l Ankukamkewe'l Mi'kmaq aqq  
Eleke'wuti kisa'matultisnik 1726ek.

Eltuek Arts Centre is in Unama'ki, one of the seven traditional and unceded ancestral territories of the people of Mi'kma'ki. This territory is covered by the Treaties of Peace and Friendship which the Mi'kmaq first signed with the British Crown in 1726.

Ketu'-keknuite'tmek aqq kepmite'tmek ula  
tela'ma'ultimkip wjit maqamikew ta'n etekl  
mtmo'taqney. Ula tett, ula maqamikek, etl-  
lukutiek l'tunen aqq apoqntmnen apoqnmassimk  
aqq weliknamk Unama'ki.

We wish to recognize and honour this understanding of the lands on which we reside. It is from here, on these lands, that we work to create and support a culture of self-reliance and vibrancy on Cape Breton Island.

## MSIT NO'KMAQ

All Our Relations

Eltuek Arts Centre is a non-profit arts organization and a division of New Dawn Enterprises, the oldest community development organization in Canada. Since 1976, New Dawn has worked within community, supporting the hard work of ordinary people, and witnessing firsthand their creativity and vibrancy when given support. Eltuek Arts Centre brings artists and the public together to create, collaborate, and imagine community development together.

170 George Street  
Sydney, NS

[eltuek.ca/donate](http://eltuek.ca/donate)  
[eltuek@newdawn.ca](mailto:eltuek@newdawn.ca)  
902.539.9560

**Eltuek Arts**  
Centre



**Eltuek Arts**  
Centre

**Self-guided  
Walking Tour**



Eltuek Arts Centre is a gathering place,  
a learning space, a centre for creative work.

Our hours of operation are 8:30am to 4:30pm,  
Monday to Friday, with special weekend hours  
throughout summer and fall.

There's lots of public art to experience, as well as  
rest stops and quiet nooks along the way.

Please feel welcome to rest your feet, read, write,  
and reflect. Public Wi-Fi is offered.

Admission is free, but donations keep us going.

If in need of a snack, light lunch, or a cup of hot  
tea, our café has many delicious options available.

All proceeds help support our Meals on Wheels  
program, providing food security and healthy  
meals to local seniors.

Accessible, universal washrooms are available on  
all levels.

Please respect the privacy and creativity of the  
artists in the building, as this is a safe place for  
them to work and gather.

## Yawning Constellations

by Andrew Gillis



Eltuek Arts Centre features private artist studios, a  
seasonal art gallery, gathering and event spaces, a  
public café, Meals on Wheels Community Kitchen,  
Nova Scotia Community College's Music Arts Program,  
Celtic Colours International Festival, The Coast Radio  
Station, Nova Stream, and the Annette Verschuren and  
Stan Shibinsky Open Studio.

This 130-year-old heritage building features  
contemporary design, high ceilings, public art, natural  
light, exposed foundation stone, and signage in  
Mi'kmaq, English, and Braille.

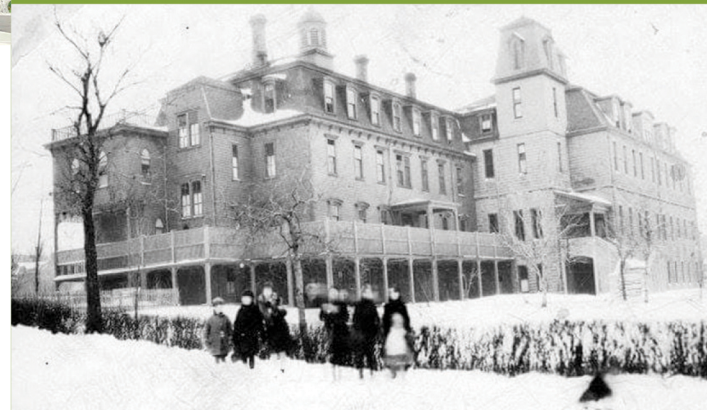
Barrier-free access is available at all entrances and the  
elevator is centrally located.



**Are Wilds**  
Gallery 203

If you build it, they will come.  
And when they gather, they will be inspired.

The original Holy Angels Convent was founded in  
1885 by the Sisters of the Congrégation de Notre-  
Dame (CND) as the first all-girls boarding and day  
school east of Montreal. The school opened the  
world of music and fine art to young women and  
children from across Cape Breton Island until it  
closed in 2011.



## HOLY ANGELS CONVENT

CA. 1915

The original Convent building (now the south  
wing) was built in Second-Empire architectural  
style, characterized by a highly symmetrical  
facade, mansard roof with dormers, and primary  
piano nobile or second floor.

In 1907, the building was expanded with a  
new north wing and central entry tower. The  
Convent and High School were sold to New Dawn  
Enterprises in 2013 and the renovation of the  
building and grounds completed in 2020.

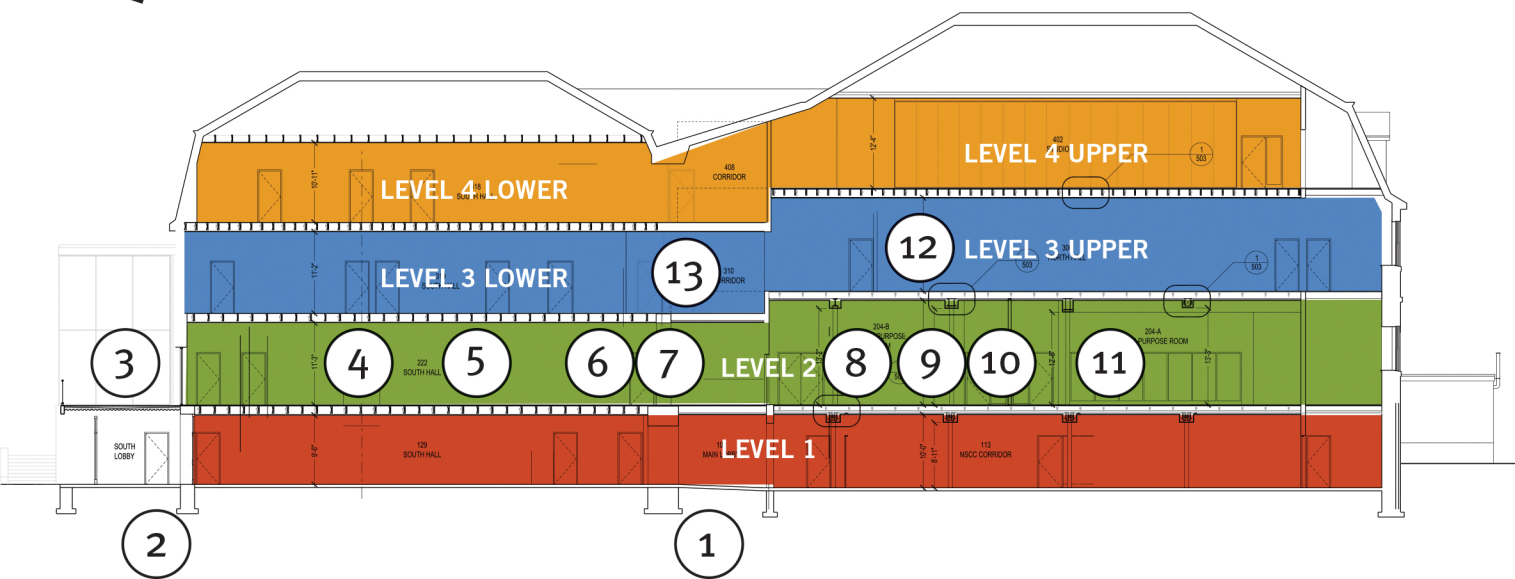
Eltuek Arts Centre now stands as a symbol of hope  
and renewal for a community that has struggled  
for more than 40 years to reinvent itself after the  
decline of the coal and steel industries.



# Self-Guided Public Art Walking Tour



There are four floors or levels and two wings (north and south) per floor. Each level has a specific colour to help guide your way, from the land up to the sky.



## Level Four (4L, 4U) Gold for the sun

- » 4L: Private Artist Studios and Offices
- » 4U: Tenant's Lounge, Annette Verschuren and Stan Shibinsky amalitaqatike'wk etl-lukutijik Open Studio (no public access)

## Level Three (3L, 3U) Blue for the sea & sky

- » 3L: Private Artist Studios
- » 3U: Corridor Gallery, Nova Stream, Celtic Colours International Festival Administrative Office

## Level Two (2L, 2U) Green for the land

- » South Wing: Public café and Meals on Wheels Community Kitchen
- » North Wing: Gallery 203, Boardroom 207, Gallery 209, Gallery 211

## Level One (1) Red for the earth

- » Celtic Colours International Festival Box Office (open during the festival)
- » North Wing: NSCC Music Arts Program (no public access)
- » South Wing: The Coast 89.7FM radio. Tune in online and enjoy the music.



**1 Resonance (2020)** by Ursula Johnson is an outdoor sculpture of wood, steel, and brass that pays homage to the sounds of Sydney's North End neighbourhood. It evokes the clamour of one hundred years of steel production, along with the discipline and excitement of a school like Holy Angels, and it rings now for contemporary art and social change. If you have a moment of inspiration or creativity here, of epiphany or understanding, we invite you to celebrate it by ringing the bell.

**2 Cultivate Heart (2022)** by Angie Arsenault is an outdoor art installation on the grounds of Eltuek Arts Centre. In this piece, we are reminded that creative work is almost always a cultivation of the human heart. The phrase echoes the mission of the creative women of the Congregation of Notre Dame (CND).

**3 Droplets (2020)** by Malcolm Pate are two framed artworks hung in the South Stairwell, as you ascend the staircase. These mirrors break the viewer apart into droplets on their journey up the stairs past them, while the movement of the sun through the day lightens and darkens the reflection, making the droplets more and less visible. While viewing them either going up or down the south stairs, one will be reminded of coming up for air in shiny, deep waters.

**4 Café Gallery** can be found inside our public café in the south wing of the second level and features artworks for sale by artists working in the building. These works are for sale by the artist(s). This gallery of work changes throughout the year and as items are sold by each artist.

**5 it is what it is (2018)** by Melissa Kearney and Nelson MacDonald. This work explores the much-used phrase "it is what it is" and the reliance by Cape Bretoners to explain the mishaps of daily life. It represents an attitude of reluctant acceptance and fatalism that allows Cape Bretoners to get on with their day to day in the face of never-ending issues with unemployment, poverty, addictions, outmigration, and a rapidly aging population.

**6 Deconstructing a Post-Industrial Memory (2012)** by Sara Roth is a wallpaper installation and visual motif of wild blueberry bushes alongside working hands and one of the last monuments of Industrial Cape Breton to fall, the Sydney Steel Plant. This artwork is in direct conversation with Ursula Johnson's Resonance located in front of the main entrance. These works speak to concepts of memory and labour of a bygone era of post-industrial Cape Breton and invoke the hard work of hope and change after the decline of industry.

**7 Edges (2019)** by Nelson MacDonald and Scott Moore is a ten-minute, looping video installation depicting the mesmerizing interaction between the ocean, wind, and the coastline of Unama'ki, Cape Breton. It is the result of a year of shooting film in Louisbourg, capturing abstract and energetic close-ups of water carving rocks, slow-motion shots of exploding waves, and hypnotizing long takes of the rising tides.

**8 Stained Glass (ca. 1960).** Eight large stained-glass panels adorning the west entry of Eltuek Arts Centre were designed by Sr. Jean Elizabeth Grant, CND, who taught art at Holy Angels for several decades. The original series of 14 panels were fabricated by artist Vincent Poggi in Montreal and installed in the Convent Chapel by 1962. The images are abstract, non-traditional, inspirational, and meditative.

**9 Etl-mawita'mk | Gallery 211** featuring seasonal exhibitions by various artists. At Eltuek, we honour Unama'ki, Cape Breton's deep connection to, and experience with, the four distinct seasons. In our main gallery, Gallery 203, you will find a new art exhibition every change in season. These are juried exhibitions from emerging and professional contemporary artists from across the country and beyond, working in a wide range of disciplines and concepts.

**10 Selections from Forged (2005, 2014/15)** These works are from a larger series of fine art photographs by Steve Wadden. Forged takes an unflinching look at the visually tangible aftermath of post-industrialization and aims to explore the complicated, co-dependant relationships between humanity and industry - touching on economics, cultural identity, politics, the environment, and industry's incredible power to write history.

**11 Kisituek / 'We have made it',** coming in 2022. This hallway gallery tells the stories of seven Mi'kmaw artists and creators – poets, storytellers, songwriters, painters, basket makers, traditional potters, weavers, and others, from Unama'ki, Cape Breton. Kisituek / 'We have made it' celebrates the brilliance and artistic legacies of these Indigenous creators.

**12 Corridor Gallery,** coming in 2022. This hallway gallery in the north wing of the third level features seasonal exhibitions by various artists. These are exhibitions from emerging and professional contemporary artists from Unama'ki, Cape Breton and across the country.

**13 Seven Sacred Teachings of Indigenous Peoples (2020)** by Loretta Gould is a series of seven paintings by located on the Third Level (3U). Gould is a visual artist from We'koqma'q in Unama'ki. She is self taught and uses fabric, photographs, and paint as artistic mediums to express her thoughts and feelings. Of this series, Loretta says, "these paintings are the Seven Teachings. The Seven Teachings are about life and being. You can't have one teaching without another. These teachings are life-teachings that are passed down from generations, and generations to come. Life lessons in one glance."